



QUANTO Transliteration Center

QUANTO Solutions GmbH

Stand: 19.01.2023

QUANTO Transliteration Center

QUANTO Transliteration Center enables the automatic conversion (**transliteration** / romanization) of business partner data (proper names, company names and addresses of database extracts) combined with localized **translation** of relevant parts of the texts like legal entities or geographical names.

Transliteration is the conversion of letters or words into corresponding characters of another language. With transliteration we reproduce a source language in the writing system of a target language. Transliteration is the phonetic conversion of characters into another script, whereas translation is the transfer of meaning.

For the conversion of business partner data, a mix of translation and transliteration is needed. Furthermore, some products, company names or brands have their own version in a particular country. To find the right equivalent in the target language, our solution retrieves data from external sources, too.

QTC is a smart combination of:

- Transliteration
- Translation
- Localization (data sourcing).

QUANTO Transliteration Center provides the following **core features**:

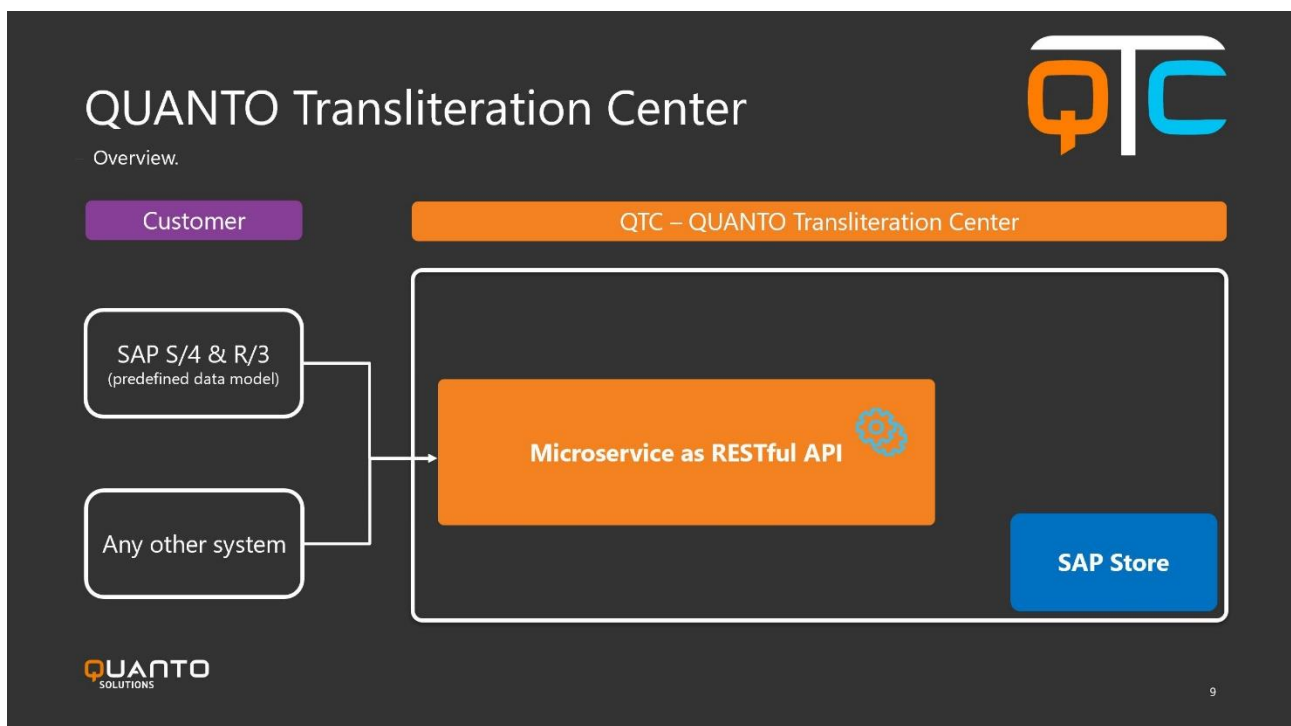
- Transliteration/translation/localization of entire business partner and address objects in high quality
- Different scripts:
 - Chinese -> Latin
 - Cyrillic -> Latin
 - Hangul -> Latin
 - Greek -> Latin

- Japanese (Katakana, Hiragana, Kanji) -> Latin
 - Kazakh <-> Latin
 - Serbian <-> Latin
 - More language pairs to come / on demand
- High performance
 - Usage of custom dictionaries
 - Integration into translation tools (XTM)
 - Strict data protection

RESTful API

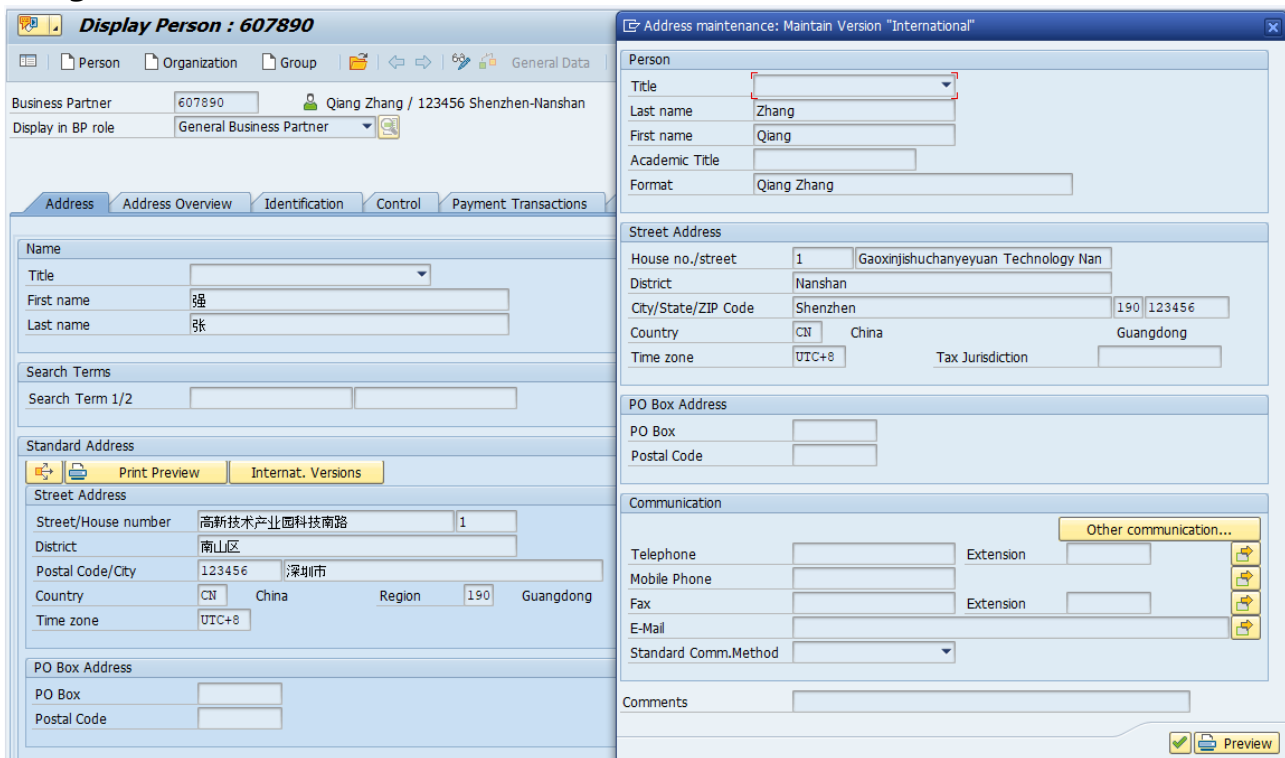
QTC is a cloud-based microservice offered as RESTful API to automatically convert your business partner data. QTC is easy to integrate via OpenAPI Specification into your existing system landscape.

Predefined data models for SAP R/3 and SAP S/4 systems are available.



Users can reach the REST API using common HTTP methods. An unlimited amount of business partner / address objects can be sent in a POST request. The REST API will process the data and display the results, which can be retrieved by GET requests.

Integration for SAP Business Partners



The screenshot displays the SAP Business Partner maintenance interface for ID 607890. The main window is titled "Display Person : 607890" and shows the following data:

- Business Partner:** 607890
- Display in BP role:** General Business Partner
- Name:** Qiang Zhang / 123456 Shenzhen-Nanshan
- Address:**
 - Street Address: 1 Gaoxinjishuchanyeyuan Technology Nan
 - District: Nanshan
 - City/State/ZIP Code: Shenzhen 190 123456
 - Country: CN China, Region: Guangdong
 - Time zone: UTC+8
- Communication:**
 - Telephone, Mobile Phone, Fax, E-Mail, and Standard Comm. Method fields are present.

The interface includes navigation tabs for "Address", "Address Overview", "Identification", "Control", and "Payment Transactions". A secondary window titled "Address maintenance: Maintain Version 'International'" is also visible, showing a similar form for address management.

Quanto QTC provides Language Solutions for

- Business Partner Master Data
- Material Master Data
- Any other text type in SAP R/3 or S/4.

Furthermore, Quanto provides any type of SAP translation service in all 39 supported languages and beyond.